



LAND CHARTER HOMES



LAND CHARTER HOMES ARE  
DELIGHTED TO WELCOME YOU TO  
*Edinburgh House*

*A Conran designed building transformed into a stunning development  
of 253 luxury apartments conveniently located by Harlow Town rail station*

EDINBURGH HOUSE | EDINBURGH WAY | HARLOW | CM20 2JE

Image courtesy of Conran & Partners

01

# OUR STORY

*Our award-winning company has been recognised for delivering high quality projects, by being presented with awards from the Local Authority Building Control Inspectors, and the Premier Building Warranties, provider of excellence in quality of design and delivery standards.*

We create bespoke homes, from one off houses in conservation areas through to large estate developments having focused on town centre redevelopment, Edinburgh House is joining our list of office to residential conversions.

Land Charter is a family run business which employs friendly and reliable staff, who care for our customers. We take pride in every project and are renowned for our high-quality finish and attention to detail.

The company employs predominately local subcontractors and tradesmen, many of whom have worked with us for many years. We also use local architects who have lived in the project's catchment area. Our team know the demands and different styles of each town or city we work in, so they can reflect the ethos of its surrounding environment.

We make best use of local influence and materials. The resources and provisions for our projects are selected for their colours and textures, which are combined to reflect the surrounding architectural vernacular.

All Land Charter developments are individual. The look and feel of our homes evolves after careful consideration of the local environment, taking into account the region's history and architectural influences.

Internally, meticulous attention to detail, and a clean and fresh look, reflects the requirement of our customers.

We are distinguished by the precision in which the vision of each project is followed through. Land Charter is unrivalled in quality, design and attentiveness.



The Maltings Newport:



*The Weavers, Long Melford*



*Six Hills, Stevenage*



*Rivers House, Chelmsford*



Image caption

## 02

# DESCRIPTION

---

***Edinburgh House was originally designed by Conran for local company Longman Publishing and was completed in 1994. This beautiful Building is exceptionally located next to Harlow Town Station. Liverpool Street 35 mins, Stansted 20 mins and Cambridge 50 mins.***

Land Charter are converting the Building to provide some 253 apartments, around three internal atria. Work commenced August 2017 with apartments ready for occupation between April 2018 to January 2019.

The conversion will span across 6 floors, there will be studios, one-bed and two-bed apartments. The majority of the apartments on the top floor will have terraces and will include some duplex apartments on the ground floor most of the apartments have their own entrance.

There is a spectacular central Atrium and on the top floor this leads to the conservatory and stunning roof garden available for all residents offering magnificent views across the River Stort, local countryside, Harlow Town Park, Terlings Park and Harlow.

All the apartments will have parking and residents a 2 minute walk to Harlow Town train station to be in London Liverpool street station in 35 minutes. This location is ideal for rental apartments, commuter residence and first time buyers.

VIDEO

Buy your first home with a 5% deposit from the Government Help to Buy scheme for first time buyers.



# 03

## LOCATION

### *Ideally* located



*Edinburgh House is perfectly connected to the city and beyond. Commuting could not be easier with Harlow train station within minutes walk away, and a fast train to London.*

Harlow offers an alternative to London living. You can arrive at Liverpool Street Station in 35 minutes, or at Tottenham Hale in 16 minutes. Stansted international airport is at your fingertips, with journeys taking just 20 minutes, meaning a weekend break abroad is a simple journey away. Both Gatwick and Heathrow airports are accessible via the M11 (Junction 7) and (M25, Junction 27 only 6 miles to the South), so those longer haul flights are easy to get to.

Travel out of town to the beautiful open countryside of north Essex and Hertfordshire with charming villages, bustling pubs and bridleways you can explore. Harlow Town Park was designed by Dame Sylvia Crowe and opened in 1957. The park covers 164 acres and includes Water, Newfoundland, Specimen, Sensory and Walled Gardens, the **Stort Valley Meadows** and Peace Wood, **paddling pool**, bandstand, **Skate Park**, Outdoor gym, **Adventure playground**, plus **Pets' Corner** and Spurriers House.



## 04

# HARLOW'S CHARM

---

*Edinburgh House is perfectly situated only minutes from Harlow Town centre.*

Since its designation as a 'new town' in 1947, the city has grown substantially and currently boasts a population of 80,000. The town is the location for Britain's first pedestrian precinct. True to its pioneering ethos, Harlow offers everything from arts, culture and theatre to sport, parks and nature reserves. Visit the Harlow Playhouse theatre, the Harlow Museum, the Town Park, the Gibberd Garden and their outstanding collection of public sculptures ranging from Auguste Rodin and Henry Moore to Elizabeth Frink and Barbara Hepworth. The Parndon Mill Art Gallery and Gibberd Gallery also offer a vibrant programme of exhibitions and events.

The Gibberd Gallery is a space run by The Harlow Art Trust which is committed to the town's beautification and cultural heritage in Harlow and Essex. Its mission is to;

"Develop the Gibberd gallery to become a regional inspirational focus for the visual arts and raise the focus of Harlow and its acclaimed sculpture and permanent watercolour collection"

Just 5 minutes from Edinburgh House is Essex Outdoors, A specialist climbing and paddle-sport centre, Harlow is also home to 'The Lock' - one of the largest indoor climbing walls in the South East.

Harlow's Town Centre plays an important role as a key shopping and leisure centre located in West Essex, almost completely free of roads within the shopping areas. You can find at the Town Centre:

- **The Harvey Centre** features some of the biggest names on the high street as well as over 30 independent retailers. The Harvey Centre is mostly undercover on two levels. The Harvey Centre has a multistorey car park
- **The Water Gardens** offers shops, restaurants set in landscaped gardens with tranquil ponds and water fountains. The Water Gardens is open air and spacious with wide walkways. The Water Gardens has a car park
- **Harlow Market** in Market Square offers local stalls and traders.



**The Lock Climbing Wall** - Essex's Premier Indoor Climbing Centre. With routes up to 14m, lead climbing, top roping, bouldering, instruction, café & shop.

# 05

# SPECIFICATION

## GROUND FLOOR

- Front doors with aluminium framed glazed door fitted with multi-point locking system

## UPPER FLOORS

- Oak veneered front door - fitted with multi-point locking system & spyhole viewer
- Audio visual entry system on upper floors

## GENERAL

- Internal doors panel styling in white satin with brushed steel door furniture
- Mirrored wardrobes with sliding doors to main bedroom
- Walls & ceilings in white emulsion
- Architrave & skirting boards in white
- Independent sprinkler system

## KITCHEN

- High gloss white fronts
- Solid oak work tops with upstands
- Integrated appliances single electric oven, ceramic hob with toughened glass splashback, extractor hood, fridge/freezer, dishwasher & washer-dryer
- Plinth lighting

## BATHROOM & EN-SUITES

- Modern white suites
- Baths to include fitted shower to one end of bath with shower screen
- Ceramic wall tiling to wet areas & matching ceramic tiled flooring
- Illuminated mirror & shaver point
- Chrome heated towel rail

## FLOORING

- Timber veneered flooring to bedrooms, living/kitchen areas & hall

## HEATING

- Electric heating & hot water

## ELECTRICAL

- LED recessed down lighting to kitchen/living areas & bathrooms
- Power points & light switches are brushed steel finish
- Smoke detectors are mains operated
- Mechanical ventilation extractor system
- TV point to bedrooms
- Audio visual entry system
- Terrestrial TV for satellite & digital TV services, including provision for Sky+, Sky HD & Sky connection (not multi-room & subject to subscription fees payable by residents). FM/DAB radio & telephone point to living area
- High speed broadband

## COMMUNAL AREAS

- Roof garden & conservatory
- Planters & seating in central atrium
- Four lifts
- LED lighting
- Secure main entrance door (2 fobs supplied per apartment)
- Bin stores & bike stores
- Building supervisor



**10 year building warranty**

[www.i-c-w.com](http://www.i-c-w.com)

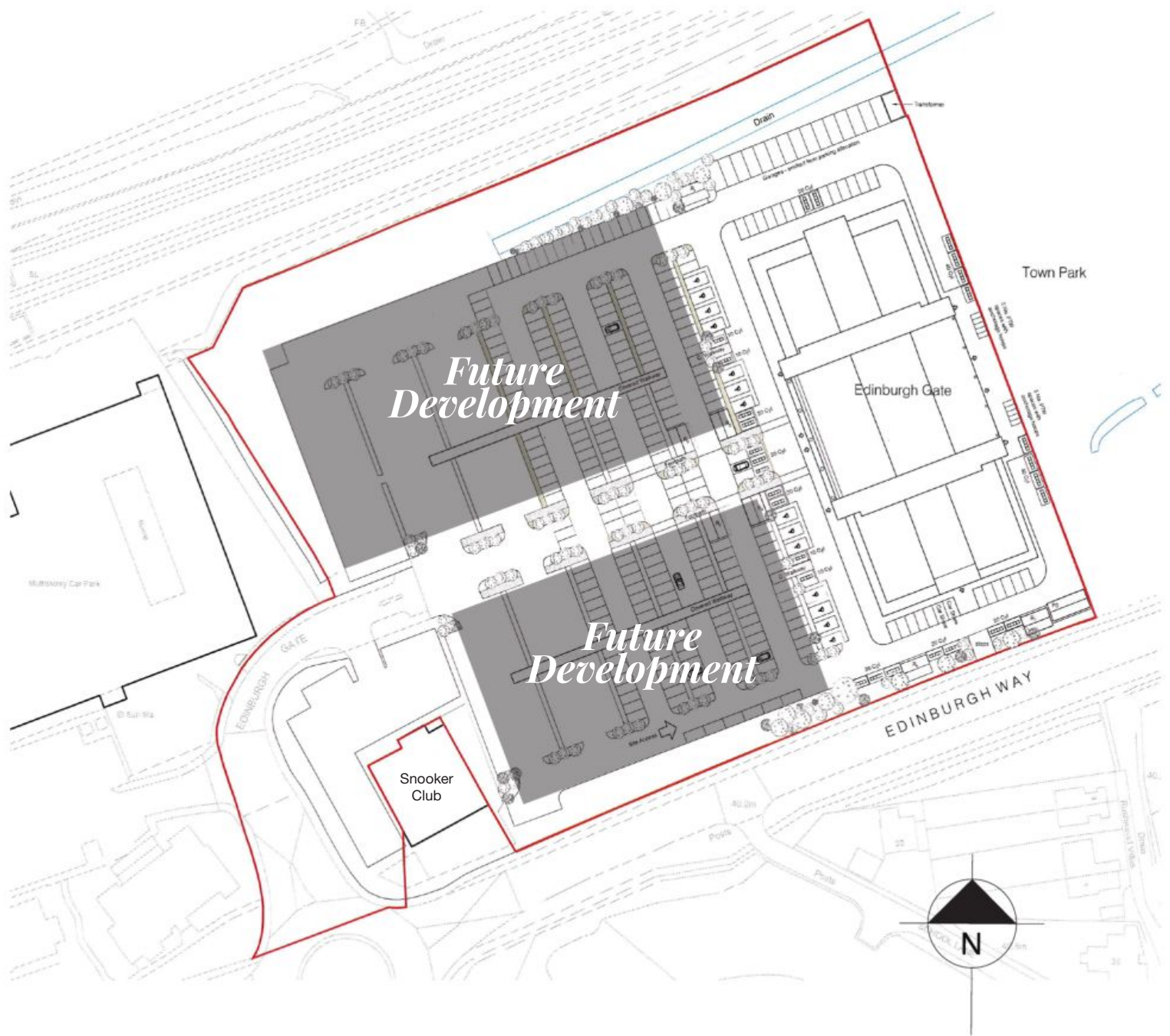


## PURCHASES PLEASE NOTE:

*This specification is provided as a general guide of the company's intentions and is subject to availability of materials and subject to contract. It is not intended to form part of a contract. As the development will be carried out over a number of months some of our plans may be amended or revised. Clients should therefore not rely upon this document as a statement of fact. Prospective purchasers should check all details with the company.*

# 06

# SITE PLAN



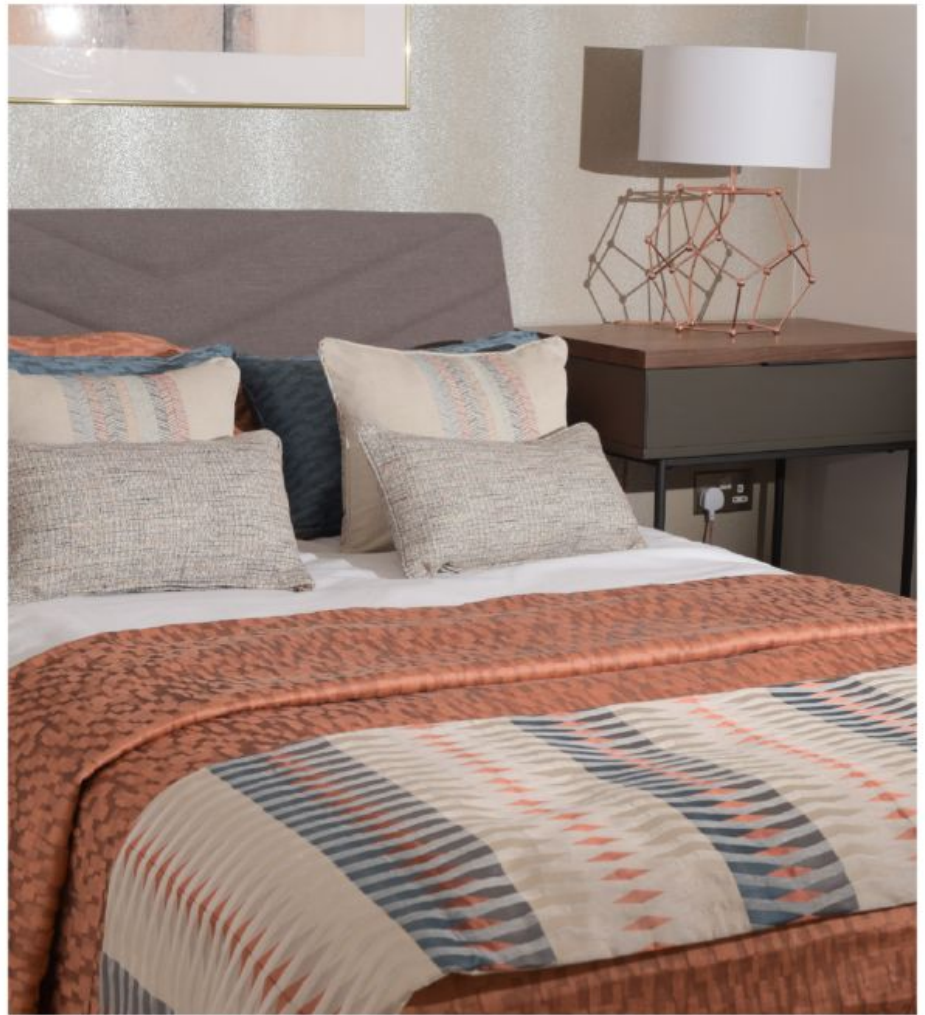


*First  
impressions  
matter*

*which is why we  
pride ourselves in the highest  
quality specifications*





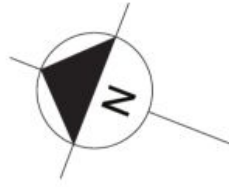


*Edinburgh House*  
was originally designed by  
Conran for Longman Publishing  
and enjoys stunning views  
across the local countryside

# GROUND FLOOR



CAR



- One Bedroom Apartment
- Two Bedroom Apartment
- Studio Apartment
- Common/shared areas



EDINBURGH GATE

PARK

Due to the nature of conversion works, layouts, sizes and specification may change. Purchasers please check all details on site before completion.

i  
t  
r  
rt

# SCHEDULE OF ACCOMMODATION

**G.01**

**ONE BEDROOM APARTMENT**

AREA:	46.3 Sq. M	498 Sq. ft
LIVING SPACE/KITCHEN:	6.90m x 3.86m	22'8" x 12'8"
BEDROOM 1:	3.86m x 3.50m	12'8" x 11'6"

**G.02**

**ONE BEDROOM APARTMENT**

AREA:	46.5 Sq. M	500 Sq. ft
LIVING SPACE/KITCHEN:	6.90m x 3.86m	22'8" x 12'8"
BEDROOM 1:	3.86m x 3.50m	12'8" x 11'6"

**G.03**

**ONE BEDROOM APARTMENT**

AREA:	46.9 Sq. M	504 Sq. ft
LIVING SPACE/KITCHEN:	6.90m x 3.90m	22'8" x 12'9"
BEDROOM 1:	3.90m x 3.45m	12'9" x 11'4"

**G.04**

**ONE BEDROOM APARTMENT**

AREA:	39.9 Sq. M	429 Sq. ft
LIVING SPACE/KITCHEN:	5.34m x 4.36m	17'6" x 14'4"
BEDROOM 1:	3.31m x 2.55m	10'10" x 8'4"

**G.05**

**STUDIO APARTMENT**

AREA:	33.7 Sq. M	362 Sq. ft
LIVING SPACE/KITCHEN:	5.23m x 4.22m	17'2" x 13'10"
BEDROOM 1:	3.44m x 2.61m	11'3" x 8'7"

**G.06**

**ONE BEDROOM APARTMENT**

AREA:	45.0 Sq. M	484 Sq. ft
LIVING SPACE/KITCHEN:	6.97m x 3.48m	22'10" x 11'5"
BEDROOM 1:	3.23m x 3.21m	10'7" x 10'6"

**G.07**

**ONE BEDROOM APARTMENT**

AREA:	46.0 Sq. M	495 Sq. ft
LIVING SPACE/KITCHEN:	7.17m x 3.47m	23'6" x 11'5"
BEDROOM 1:	3.34m x 3.23m	10'11" x 10'7"

**G.08**

**ONE BEDROOM APARTMENT**

AREA:	48.3 Sq. M	519 Sq. ft
LIVING SPACE/KITCHEN:	7.17m x 3.67m	23'6" x 12'0"
BEDROOM 1:	3.81m x 3.23m	12'6" x 10'7"

**G.09**

**TWO BEDROOM APARTMENT**

AREA:	53.8 Sq. M	579 Sq. ft
LIVING SPACE/KITCHEN:	6.82m x 4.86m	22'4" x 15'11"
BEDROOM 1:	3.47m x 3.05m	11'5" x 10'0"
BEDROOM 2:	3.25m x 2.59m	10'8" x 8'6"

**G.10**

**ONE BEDROOM APARTMENT**

AREA:	44.4 Sq. M	477 Sq. ft
LIVING SPACE/KITCHEN:	7.99m x 3.32m	26'2" x 10'11"
BEDROOM 1:	3.21m x 2.99m	10'6" x 9'8"

**G.11**

**STUDIO APARTMENT**

AREA:	36.1 Sq. M	388 Sq. ft
LIVING SPACE/KITCHEN:	4.17m x 4.10m	13'8" x 13'5"
BEDROOM 1:	3.75m x 2.72m	12'4" x 8'11"

Due to the nature of conversion works, layouts, sizes and specification may change. Purchasers please check all details on site before completion.

# GROUND FLOOR

**G.12**

**STUDIO  
APARTMENT**

AREA:	33.8 Sq. M	363 Sq. ft
LIVING SPACE/KITCHEN:	4.37m x 4.15m	14'4" x 13'7"
BEDROOM 1:	4.60m x 2.84m	15'1" x 9'4"

**G.13**

**STUDIO  
APARTMENT**

AREA:	35.6 Sq. M	383 Sq. ft
LIVING SPACE/KITCHEN:	4.37m x 4.37m	14'4" x 14'4"
BEDROOM 1:	3.82m x 3.30m	12'6" x 10'10"

**G.14**

**STUDIO  
APARTMENT**

AREA:	38.4 Sq. M	413 Sq. ft
LIVING SPACE/KITCHEN:	4.45m x 3.36m	14'7" x 11'0"
BEDROOM 1:	3.63m x 2.78m	11'11" x 9'1"

**G.15**

**ONE BEDROOM  
APARTMENT**

AREA:	44.4 Sq. M	477 Sq. ft
LIVING SPACE/KITCHEN:	7.99m x 3.32m	26'2" x 10'11"
BEDROOM 1:	3.43m x 3.21m	11'3" x 10'6"

**G.16**

**TWO BEDROOM  
APARTMENT**

AREA:	53.7 Sq. M	578 Sq. ft
LIVING SPACE/KITCHEN:	6.82m x 4.81m	22'4" x 15'9"
BEDROOM 1:	3.47m x 3.07m	11'5" x 10'1"
BEDROOM 2:	3.25m x 2.59m	10'8" x 8'6"

**G.17**

**ONE BEDROOM  
APARTMENT**

AREA:	48.3 Sq. M	519 Sq. ft
LIVING SPACE/KITCHEN:	7.17m x 3.67m	23'6" x 12'0"
BEDROOM 1:	3.81m x 3.20m	12'6" x 10'6"

**G.18**

**ONE BEDROOM  
APARTMENT**

AREA:	46.0 Sq. M	495 Sq. ft
LIVING SPACE/KITCHEN:	7.17m x 3.47m	23'6" x 11'5"
BEDROOM 1:	3.34m x 3.23m	10'11" x 10'7"

**G.19**

**ONE BEDROOM  
APARTMENT**

AREA:	45.0 Sq. M	484 Sq. ft
LIVING SPACE/KITCHEN:	6.97m x 3.48m	22'10" x 11'5"
BEDROOM 1:	3.23m x 3.21m	10'7" x 10'6"

**G.20**

**ONE BEDROOM  
APARTMENT**

AREA:	39.9 Sq. M	429 Sq. ft
LIVING SPACE/KITCHEN:	5.32m x 4.36m	17'5" x 14'4"
BEDROOM 1:	3.31m x 2.55m	10'10" x 8'4"

**G.21**

**STUDIO  
APARTMENT**

AREA:	33.6 Sq. M	361 Sq. ft
LIVING SPACE/KITCHEN:	5.24m x 4.28m	17'2" x 14'0"
BEDROOM 1:	3.44m x 2.61m	11'4" x 8'7"

**G.22**

**ONE BEDROOM  
APARTMENT**

AREA:	46.9 Sq. M	504 Sq. ft
LIVING SPACE/KITCHEN:	6.90m x 3.90m	22'8" x 12'9"
BEDROOM 1:	3.90m x 3.45m	12'9" x 11'4"

Due to the nature of conversion works, layouts, sizes and specification may change. Purchasers please check all details on site before completion.

# GROUND FLOOR CONT.

**G.23**

**ONE BEDROOM  
APARTMENT**

AREA:	46.5 Sq. M	500 Sq. ft
LIVING SPACE/KITCHEN:	6.90m x 3.86m	22'8" x 12'8"
BEDROOM 1:	3.86m x 2.84m	12'8" x 9'4"

**G.24**

**ONE BEDROOM  
APARTMENT**

AREA:	47.5 Sq. M	511 Sq. ft
LIVING SPACE/KITCHEN:	6.90m x 3.97m	22'8" x 13'0"
BEDROOM 1:	3.97m x 2.84m	13'0" x 9'4"

**G.25**

**ONE BEDROOM  
APARTMENT**

AREA:	47.5 Sq. M	511 Sq. ft
LIVING SPACE/KITCHEN:	6.90m x 3.97m	22'8" x 13'0"
BEDROOM 1:	3.97m x 3.50m	13'0" x 11'6"

**G.26**

**ONE BEDROOM  
APARTMENT**

AREA:	46.5 Sq. M	500 Sq. ft
LIVING SPACE/KITCHEN:	6.90m x 3.86m	22'8" x 12'8"
BEDROOM 1:	3.86m x 3.50m	12'8" x 11'6"

**G.27**

**STUDIO  
APARTMENT**

AREA:	47.4 Sq. M	510 Sq. ft
LIVING SPACE/KITCHEN:	6.90m x 3.90m	22'8" x 12'9"
BEDROOM 1:	3.97m x 3.45m	13'0" x 11'4"

**G.28**

**ONE BEDROOM  
APARTMENT**

AREA:	39.8 Sq. M	428 Sq. ft
LIVING SPACE/KITCHEN:	5.32m x 4.36m	17'5" x 14'4"
BEDROOM 1:	3.31m x 2.55m	10'10" x 8'4"

**G.29**

**ONE BEDROOM  
APARTMENT**

AREA:	45.3 Sq. M	487 Sq. ft
LIVING SPACE/KITCHEN:	6.97m x 3.48m	22'10" x 11'5"
BEDROOM 1:	3.32m x 3.21m	10'11" x 10'6"

**G.30**

**ONE BEDROOM  
APARTMENT**

AREA:	46.2 Sq. M	497 Sq. ft
LIVING SPACE/KITCHEN:	7.17m x 3.47m	23'6" x 11'5"
BEDROOM 1:	3.32m x 3.31m	10'11" x 10'10"

**G.31**

**ONE BEDROOM  
APARTMENT**

AREA:	49.9 Sq. M	537 Sq. ft
LIVING SPACE/KITCHEN:	7.37m x 3.67m	24'2" x 12'0"
BEDROOM 1:	3.84m x 3.12m	12'7" x 10'3"

**G.32**

**TWO BEDROOM  
APARTMENT**

AREA:	52.9 Sq. M	569 Sq. ft
LIVING SPACE/KITCHEN:	6.82m x 4.45m	22'4" x 14'7"
BEDROOM 1:	3.39m x 3.35m	11'1" x 10'12"
BEDROOM 2:	3.34m x 2.30m	10'11" x 7'6"

**G.33**

**TWO BEDROOM  
APARTMENT**

AREA:	52.1 Sq. M	560 Sq. ft
LIVING SPACE/KITCHEN:	5.89m x 3.71m	19'4" x 12'2"
BEDROOM 1:	4.05m x 2.64m	13'3" x 8'8"
BEDROOM 2:	3.84m x 2.63m	12'7" x 8'7"

Due to the nature of conversion works, layouts, sizes and specification may change. Purchasers please check all details on site before completion.

**G.34****TWO BEDROOM  
APARTMENT**

AREA:	52.1 Sq. M	560 Sq. ft
LIVING SPACE/KITCHEN:	5.89m x 3.71m	19'4" x 12'2"
BEDROOM 1:	4.05m x 2.64m	12'3" x 8'8"
BEDROOM 2:	3.84m x 2.63m	12'7" x 8'7"

**G.35****TWO BEDROOM  
APARTMENT**

AREA:	52.9 Sq. M	569 Sq. ft
LIVING SPACE/KITCHEN:	6.82m x 4.45m	22'4" x 14'7"
BEDROOM 1:	3.44m x 3.39m	11'3" x 11'1"
BEDROOM 2:	3.34m x 2.38m	10'11" x 7'10"

**G.36****ONE BEDROOM  
APARTMENT**

AREA:	49.9 Sq. M	537 Sq. ft
LIVING SPACE/KITCHEN:	7.37m x 3.67m	24'2" x 12'0"
BEDROOM 1:	3.84m x 3.12m	12'7" x 10'3"

**G.37****ONE BEDROOM  
APARTMENT**

AREA:	46.3 Sq. M	498 Sq. ft
LIVING SPACE/KITCHEN:	7.17m x 3.47m	23'6" x 11'5"
BEDROOM 1:	3.32m x 3.31m	10'11" x 10'10"

**G.38****ONE BEDROOM  
APARTMENT**

AREA:	45.0 Sq. M	484 Sq. ft
LIVING SPACE/KITCHEN:	6.97m x 3.48m	22'10" x 11'5"
BEDROOM 1:	3.32m x 3.21m	10'7" x 10'6"

**G.39****ONE BEDROOM  
APARTMENT**

AREA:	40.1 Sq. M	431 Sq. ft
LIVING SPACE/KITCHEN:	5.32m x 4.36m	17'5" x 14'4"
BEDROOM 1:	3.31m x 2.55m	10'10" x 8'4"

**G.40****STUDIO  
APARTMENT**

AREA:	33.9 Sq. M	364 Sq. ft
LIVING SPACE/KITCHEN:	5.30m x 4.32m	17'5" x 14'2"
BEDROOM 1:	3.41m x 2.56m	11'2" x 8'5"

**G.41****ONE BEDROOM  
APARTMENT**

AREA:	47.4 Sq. M	510 Sq. ft
LIVING SPACE/KITCHEN:	6.90m x 3.90m	22'8" x 12'9"
BEDROOM 1:	3.97m x 3.45m	13'0" x 11'4"

**G.42****ONE BEDROOM  
APARTMENT**

AREA:	46.5 Sq. M	500 Sq. ft
LIVING SPACE/KITCHEN:	6.90m x 3.86m	22'8" x 12'8"
BEDROOM 1:	3.86m x 2.84m	12'8" x 9'4"

**G.43****ONE BEDROOM  
APARTMENT**

AREA:	46.3 Sq. M	498 Sq. ft
LIVING SPACE/KITCHEN:	6.90m x 3.86m	22'8" x 12'8"
BEDROOM 1:	3.86m x 2.84m	12'8" x 9'4"

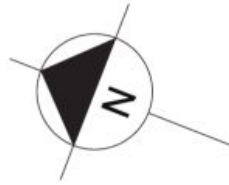
Due to the nature of conversion works, layouts, sizes and specification may change. Purchasers please check all details on site before completion.

# FIRST TO FOURTH FLOORS



CAR





- One Bedroom Apartment
- Two Bedroom Apartment
- Common/shared areas



EDINBURGH GATE

PARK

Due to the nature of conversion works, layouts, sizes and specification may change. Purchasers please check all details on site before completion.

r t t  
r /

# SCHEDULE OF ACCOMMODATION

<b>1.01, 2.01, 3.01, 4.01</b> ONE BEDROOM APARTMENT	AREA: LIVING SPACE/KITCHEN: BEDROOM 1:	52.5 Sq. M 8.25m x 4.25m 3.95m x 2.60m	565 Sq. ft 25'1" x 13'11" 12'11" x 8'6"	
<b>1.02, 2.02, 3.02, 4.02</b> ONE BEDROOM APARTMENT	AREA: LIVING SPACE/KITCHEN: BEDROOM 1:	37.5 Sq. M 6.57m x 2.90m 3.33m x 2.73m	403 Sq. ft 19'7" x 9'6" 10'11" x 8'11"	
<b>1.03, 2.03, 3.03, 4.03</b> ONE BEDROOM APARTMENT	AREA: LIVING SPACE/KITCHEN: BEDROOM 1:	42.1 Sq. M 6.57m x 3.59m 3.33m x 2.73m	453 Sq. ft 19'7" x 11'9" 10'11" x 8'11"	
<b>1.04, 2.04, 3.04, 4.04</b> ONE BEDROOM APARTMENT	AREA: LIVING SPACE/KITCHEN: BEDROOM 1:	48.3 Sq. M 6.95m x 3.92m 3.95m x 3.25m	519 Sq. ft 20'10" x 12'10" 12'11" x 10'8"	Door to balcony Door to balcony
<b>1.05, 2.05, 3.05, 4.05</b> ONE BEDROOM APARTMENT	AREA: LIVING SPACE/KITCHEN: BEDROOM 1:	40.9 Sq. M 6.57m x 3.42m 3.33m x 2.73m	440 Sq. ft 19'7" x 11'2" 10'11" x 8'11"	
<b>1.06, 2.06, 3.06, 4.06</b> ONE BEDROOM APARTMENT	AREA: LIVING SPACE/KITCHEN: BEDROOM 1:	48.3 Sq. M 6.95m x 3.92m 3.94m x 3.25m	519 Sq. ft 20'10" x 12'10" 12'11" x 10'8"	Door to balcony Door to balcony
<b>1.07, 2.07, 3.07, 4.07</b> ONE BEDROOM APARTMENT	AREA: LIVING SPACE/KITCHEN: BEDROOM 1:	41.8 Sq. M 6.57m x 3.53m 3.33m x 2.73m	449 Sq. ft 19'7" x 11'7" 10'11" x 8'11"	
<b>1.08, 2.08, 3.08, 4.08</b> ONE BEDROOM APARTMENT	AREA: LIVING SPACE/KITCHEN: BEDROOM 1:	52.5 Sq. M 8.25m x 4.25m 3.95m x 2.60m	565 Sq. ft 20'10" x 13'11" 12'11" x 8'6"	
<b>1.09, 2.09, 3.09, 4.09</b> ONE BEDROOM APARTMENT	AREA: LIVING SPACE/KITCHEN: BEDROOM 1:	37.5 Sq. M 6.57m x 2.90m 3.33m x 2.73m	403 Sq. ft 19'7" x 9'6" 10'11" x 8'11"	
<b>1.10, 2.10, 3.10, 4.10</b> TWO BEDROOM APARTMENT	AREA: LIVING SPACE/KITCHEN: BEDROOM 1: BEDROOM 2:	60.8 Sq. M 6.32m x 4.15m 3.91m x 2.80m 3.09m x 2.60m	654 Sq. ft 18'9" x 13'7" 12'9" x 9'2" 10'1" x 8'6"	
<b>1.11, 2.11, 3.11, 4.11</b> ONE BEDROOM APARTMENT	AREA: LIVING SPACE/KITCHEN: BEDROOM 1:	43.9 Sq. M 6.33m x 3.48m 3.09m x 2.92m	472 Sq. ft 18'9" x 11'5" 10'1" x 9'7"	

Due to the nature of conversion works, layouts, sizes and specification may change. Purchasers please check all details on site before completion.

# FIRST TO FOURTH FLOORS

1.12, 2.12, 3.12, 4.12

ONE BEDROOM  
APARTMENT

AREA:	45.2 Sq. M	486 Sq. ft
LIVING SPACE/KITCHEN:	6.33m x 3.78m	18'9" x 12'4"
BEDROOM 1:	3.19m x 2.71m	10'5" x 8'10"

1.13, 2.13, 3.13, 4.13

ONE BEDROOM  
APARTMENT

AREA:	44.7 Sq. M	481 Sq. ft
LIVING SPACE/KITCHEN:	6.43m x 3.82m	19'1" x 12'6"
BEDROOM 1:	3.39m x 2.71m	11'1" x 8'10"

1.14, 2.14, 3.14, 4.14

ONE BEDROOM  
APARTMENT

AREA:	39.7 Sq. M	427 Sq. ft
LIVING SPACE/KITCHEN:	4.21m x 3.90m	12'9" x 12'85"
BEDROOM 1:	3.42m x 2.86m	11'2" x 9'4"

1.15, 2.15, 3.15, 4.15

ONE BEDROOM  
APARTMENT

AREA:	35.7 Sq. M	384 Sq. ft
LIVING SPACE/KITCHEN:	4.95m x 3.04m	14'3" x 9'11"
BEDROOM 1:	3.23m x 3.00m	10'7" x 9'10"

1.16, 2.16, 3.16, 4.16

ONE BEDROOM  
APARTMENT

AREA:	35.8 Sq. M	385 Sq. ft
LIVING SPACE/KITCHEN:	4.79m x 4.71m	15'4" x 15'4"
BEDROOM 1:	3.95m x 3.22m	12'11" x 10'6"

1.17, 2.17, 3.17, 4.17

ONE BEDROOM  
APARTMENT

AREA:	42.1 Sq. M	453 Sq. ft
LIVING SPACE/KITCHEN:	5.75m x 4.50m	12'9" x 14'9"
BEDROOM 1:	3.23m x 2.67m	10'7" x 8'6"

1.18, 2.18, 3.18, 4.18

TWO BEDROOM  
APARTMENT

AREA:	51.0 Sq. M	548 Sq. ft
LIVING SPACE/KITCHEN:	5.38m x 3.36m	15'8" x 11'0"
BEDROOM 1:	3.53m x 2.70m	11'7" x 8'10"
BEDROOM 2:	3.28m x 2.09m	10'9" x 6'10"

1.19, 2.19, 3.19, 4.19

TWO BEDROOM  
APARTMENT

AREA:	49.1 Sq. M	528 Sq. ft
LIVING SPACE/KITCHEN:	4.81m x 3.77m	15'8" x 11'0"
BEDROOM 1:	3.38m x 2.81m	13'9" x 9'2"
BEDROOM 2:	5.22m x 2.30m	17'1" x 7'6"

1.20, 2.20, 3.20, 4.20

TWO BEDROOM  
APARTMENT

AREA:	56.7 Sq. M	610 Sq. ft
LIVING SPACE/KITCHEN:	5.06m x 3.82m	16'7" x 12'6"
BEDROOM 1:	3.12m x 2.90m	9'1" x 8'5"
BEDROOM 2:	2.77m x 2.57m	10'2" x 9'6"

1.21, 2.21, 3.21, 4.21

ONE BEDROOM  
APARTMENT

AREA:	45.0 Sq. M	484 Sq. ft
LIVING SPACE/KITCHEN:	6.43m x 3.81m	21'1" x 12'6"
BEDROOM 1:	3.39m x 2.71m	11'1" x 8'10"

1.22, 2.22, 3.22, 4.22

ONE BEDROOM  
APARTMENT

AREA:	45.1 Sq. M	485 Sq. ft
LIVING SPACE/KITCHEN:	6.33m x 3.78m	20'9" x 12'4"
BEDROOM 1:	3.19m x 2.63m	10'5" x 8'7"

Due to the nature of conversion works, layouts, sizes and specification may change. Purchasers please check all details on site before completion.

# FIRST TO FOURTH FLOORS CONT.

**1.23, 2.23, 3.23, 4.23**

**ONE BEDROOM  
APARTMENT**

AREA:	43.9 Sq. M	472 Sq. ft
LIVING SPACE/KITCHEN:	6.33m x 3.48m	20'9" x 11'5"
BEDROOM 1:	3.09m x 2.92m	10'1" x 9'7"

**1.24, 2.24, 3.24, 4.24**

**TWO BEDROOM  
APARTMENT**

AREA:	60.8 Sq. M	654 Sq. ft
LIVING SPACE/KITCHEN:	6.32m x 4.15m	20'8" x 13'7"
BEDROOM 1:	3.91m x 2.80m	12'9" x 9'2"
BEDROOM 2:	3.10m x 2.60m	10'2" x 8'6"

**1.25, 2.25, 3.25, 4.25**

**ONE BEDROOM  
APARTMENT**

AREA:	52.5 Sq. M	565 Sq. ft
LIVING SPACE/KITCHEN:	8.25m x 4.25m	25'1" x 13'11"
BEDROOM 1:	3.95m x 2.59m	12'11" x 8'6"

**1.26, 2.26, 3.26, 4.26**

**ONE BEDROOM  
APARTMENT**

AREA:	37.5 Sq. M	403 Sq. ft
LIVING SPACE/KITCHEN:	6.57m x 2.90m	21'6" x 9'6"
BEDROOM 1:	3.33m x 2.73m	10'11" x 8'11"

**1.27, 2.27, 3.27, 4.27**

**ONE BEDROOM  
APARTMENT**

AREA:	48.3 Sq. M	519 Sq. ft	
LIVING SPACE/KITCHEN:	6.95m x 3.92m	20'10" x 12'10"	Door to balcony
BEDROOM 1:	3.95m x 3.25m	12'11" x 10'8"	Door to balcony

**1.28, 2.28, 3.28, 4.28**

**ONE BEDROOM  
APARTMENT**

AREA:	37.5 Sq. M	403 Sq. ft
LIVING SPACE/KITCHEN:	6.57m x 3.53m	21'6" x 11'5"
BEDROOM 1:	3.33m x 2.73m	10'11" x 8'11"

**1.29, 2.29, 3.29, 4.29**

**ONE BEDROOM  
APARTMENT**

AREA:	48.3 Sq. M	519 Sq. ft	
LIVING SPACE/KITCHEN:	6.95m x 3.92m	20'10" x 12'10"	Door to balcony
BEDROOM 1:	3.95m x 3.25m	12'11" x 10'8"	Door to balcony

**1.30, 2.30, 3.30, 4.30**

**ONE BEDROOM  
APARTMENT**

AREA:	40.9 Sq. M	440 Sq. ft
LIVING SPACE/KITCHEN:	6.57m x 3.42m	21'6" x 11'2"
BEDROOM 1:	3.33m x 2.73m	10'11" x 8'11"

**1.31, 2.31, 3.31, 4.31**

**ONE BEDROOM  
APARTMENT**

AREA:	52.5 Sq. M	565 Sq. ft
LIVING SPACE/KITCHEN:	8.25m x 4.25m	25'1" x 13'11"
BEDROOM 1:	3.95m x 2.60m	12'11" x 8'6"

**1.32, 2.32, 3.32, 4.32**

**ONE BEDROOM  
APARTMENT**

AREA:	42.1 Sq. M	453 Sq. ft
LIVING SPACE/KITCHEN:	6.57m x 3.59m	21'6" x 11'9"
BEDROOM 1:	3.33m x 2.73m	10'11" x 8'11"

**1.33, 2.33, 3.33, 4.33**

**ONE BEDROOM  
APARTMENT**

AREA:	37.5 Sq. M	403 Sq. ft
LIVING SPACE/KITCHEN:	6.57m x 2.90m	21'6" x 9'6"
BEDROOM 1:	3.33m x 2.73m	10'11" x 8'11"

Due to the nature of conversion works, layouts, sizes and specification may change. Purchasers please check all details on site before completion.

**1.34, 2.34, 3.34, 4.34****TWO BEDROOM APARTMENT**

AREA:	60.9 Sq. M	655 Sq. ft
LIVING SPACE/KITCHEN:	6.32m x 4.15m	20'8" x 13'7"
BEDROOM 1:	3.91m x 2.80m	12'9" x 9'2"
BEDROOM 2:	3.10m x 2.60m	10'2" x 8'6"

**1.35, 2.35, 3.35, 4.35****ONE BEDROOM APARTMENT**

AREA:	43.9 Sq. M	472 Sq. ft
LIVING SPACE/KITCHEN:	6.33m x 3.48m	20'9" x 11'5"
BEDROOM 1:	3.09m x 2.92m	10'1" x 9'7"

**1.36, 2.36, 3.36, 4.36****ONE BEDROOM APARTMENT**

AREA:	45.2 Sq. M	486 Sq. ft
LIVING SPACE/KITCHEN:	6.33m x 3.78m	20'9" x 12'4"
BEDROOM 1:	3.19m x 2.71m	10'5" x 8'10"

**1.37, 2.37, 3.37, 4.37****ONE BEDROOM APARTMENT**

AREA:	44.6 Sq. M	480 Sq. ft
LIVING SPACE/KITCHEN:	6.46m x 3.81m	19'2" x 12'6"
BEDROOM 1:	3.15m x 2.58m	10'4" x 8'5"

**1.38, 2.38, 3.38, 4.38****TWO BEDROOM APARTMENT**

AREA:	71.1 Sq. M	765 Sq. ft
LIVING SPACE/KITCHEN:	5.11m x 4.85m	18'9" x 15'9"
BEDROOM 1:	4.50m x 3.79m	14'9" x 12'5"
BEDROOM 2:	4.27m x 2.78m	14'0" x 9'1"

**1.39, 2.39, 3.39, 4.39****TWO BEDROOM APARTMENT**

AREA:	60.0 Sq. M	645 Sq. ft
LIVING SPACE/KITCHEN:	6.36m x 4.28m	18'10" x 14'0"
BEDROOM 1:	3.70m x 3.62m	12'1" x 11'10"
BEDROOM 2:	2.93m x 2.92m	9'7" x 9'7"

**1.40, 2.40, 3.40, 4.40****TWO BEDROOM APARTMENT**

AREA:	59.9 Sq. M	644 Sq. ft
LIVING SPACE/KITCHEN:	6.46m x 4.28m	19'2" x 14'0"
BEDROOM 1:	3.70m x 3.62m	12'1" x 11'10"
BEDROOM 2:	2.93m x 2.92m	9'7" x 9'7"

**1.41, 2.41, 3.41, 4.41****TWO BEDROOM APARTMENT**

AREA:	71.2 Sq. M	766 Sq. ft
LIVING SPACE/KITCHEN:	5.11m x 4.85m	15'10" x 15'9"
BEDROOM 1:	3.93m x 3.78m	12'10" x 12'4"
BEDROOM 2:	4.27m x 2.78m	14'0" x 9'1"

**1.42, 2.42, 3.42, 4.42****ONE BEDROOM APARTMENT**

AREA:	44.6 Sq. M	480 Sq. ft
LIVING SPACE/KITCHEN:	6.46m x 3.81m	19'2" x 12'6"
BEDROOM 1:	3.15m x 2.58m	10'4" x 8'5"

**1.43, 2.43, 3.43, 4.43****ONE BEDROOM APARTMENT**

AREA:	45.2 Sq. M	486 Sq. ft
LIVING SPACE/KITCHEN:	6.33m x 3.78m	18'9" x 12'4"
BEDROOM 1:	3.19m x 2.71m	10'5" x 8'10"

**1.44, 2.44, 3.44, 4.44****ONE BEDROOM APARTMENT**

AREA:	43.8 Sq. M	471 Sq. ft
LIVING SPACE/KITCHEN:	6.33m x 3.48m	18'9" x 11'5"
BEDROOM 1:	3.09m x 2.92m	10'1" x 9'7"

**1.45, 2.45, 3.45, 4.45****TWO BEDROOM APARTMENT**

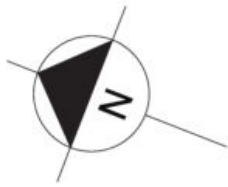
AREA:	60.9 Sq. M	655 Sq. ft
LIVING SPACE/KITCHEN:	6.32m x 4.15m	18'9" x 13'7"
BEDROOM 1:	3.91m x 2.80m	12'9" x 9'2"
BEDROOM 2:	3.09m x 2.60m	10'1" x 8'6"

Due to the nature of conversion works, layouts, sizes and specification may change. Purchasers please check all details on site before completion.

# FIFTH FLOOR



CAR



- One Bedroom Apartment
- Private Terrace
- Two Bedroom Apartment
- Communal Garden
- Two Bedroom Duplex Apartment
- Common/shared areas



EDINBURGH GATE

PARK

Due to the nature of conversion works, layouts, sizes and specification may change. Purchasers please check all details on site before completion.

# SCHEDULE OF ACCOMMODATION

<b>5.01</b> DUPLEX APARTMENT	AREA:	58.9 Sq. M	633 Sq. ft	
	LIVING SPACE/KITCHEN:	5.84m x 4.34m	19'2" x 14'3"	Door to terrace
	BEDROOM 1:	3.24m x 2.92m	10'7" x 9'7"	
	BEDROOM 2:	3.24m x 2.23m	10'7" x 7'4"	
<b>5.02</b> DUPLEX APARTMENT	AREA:	58.9 Sq. M	633 Sq. ft	
	LIVING SPACE/KITCHEN:	5.84m x 4.34m	19'2" x 14'3"	Door to terrace
	BEDROOM 1:	3.24m x 2.92m	10'7" x 9'7"	
	BEDROOM 2:	3.24m x 2.23m	10'7" x 7'4"	
<b>5.03</b> TWO BEDROOM APARTMENT	AREA:	62.1 Sq. M	668 Sq. ft	
	LIVING SPACE/KITCHEN:	5.96m x 4.94m	19'7" x 16'2"	Door to terrace
	BEDROOM 1:	3.93m x 3.11m	12'11" x 10'2"	Door to corner terrace
	BEDROOM 2:	3.93m x 2.15m	12'11" x 7'0"	
<b>5.04</b> TWO BEDROOM APARTMENT	AREA:	60.7 Sq. M	653 Sq. ft	
	LIVING SPACE/KITCHEN:	7.81m x 3.41m	25'7" x 11'2"	Door to terrace
	BEDROOM 1:	3.84m x 2.66m	12'7" x 8'9"	
	BEDROOM 2:	2.96m x 2.70m	9'8" x 8'10"	
<b>5.05</b> TWO BEDROOM APARTMENT	AREA:	63.8 Sq. M	687 Sq. ft	
	LIVING SPACE/KITCHEN:	7.81m x 3.41m	25'7" x 11'2"	Door to terrace
	BEDROOM 1:	5.08m x 2.90m	16'8" x 9'6"	
	BEDROOM 2:	2.76m x 2.70m	9'0" x 8'10"	
<b>5.06</b> DUPLEX APARTMENT	AREA:	89.0 Sq. M	957 Sq. ft	
	LIVING SPACE/KITCHEN:	5.76m x 4.06m	18'11" x 13'4"	Door to terrace
	BEDROOM 1:	5.44m x 4.61m	17'10" x 15'1"	Door to balcony
	BEDROOM 2:	3.92m x 3.00m	12'10" x 9'11"	
<b>5.07</b> ONE BEDROOM APARTMENT	AREA:	41.9 Sq. M	451 Sq. ft	
	LIVING SPACE/KITCHEN:	5.14m x 4.68m	16'10" x 15'4"	Door to terrace
	BEDROOM 1:	3.40m x 3.14m	11'2" x 10'4"	
<b>5.08</b> ONE BEDROOM APARTMENT	AREA:	39.2 Sq. M	421 Sq. ft	
	LIVING SPACE/KITCHEN:	6.55m x 4.43m	21'6" x 14'6"	
	BEDROOM 1:	3.37m x 3.00m	11'1" x 9'11"	
<b>5.09</b> ONE BEDROOM APARTMENT	AREA:	37.2 Sq. M	400 Sq. ft	
	LIVING SPACE/KITCHEN:	5.14m x 3.77m	16'10" x 12'4"	Door to terrace
	BEDROOM 1:	3.40m x 3.14m	11'2" x 10'4"	
<b>5.10</b> ONE BEDROOM APARTMENT	AREA:	38.7 Sq. M	416 Sq. ft	
	LIVING SPACE/KITCHEN:	5.33m x 3.92m	17'6" x 12'10"	
	BEDROOM 1:	3.25m x 3.23m	10'8" x 10'7"	
<b>5.11</b> ONE BEDROOM APARTMENT	AREA:	37.2 Sq. M	400 Sq. ft	
	LIVING SPACE/KITCHEN:	5.14m x 3.77m	16'10" x 12'4"	Door to terrace
	BEDROOM 1:	3.40m x 3.14m	11'2" x 10'4"	

Due to the nature of conversion works, layouts, sizes and specification may change. Purchasers please check all details on site before completion.



# FIFTH FLOOR

<b>5.12</b> ONE BEDROOM APARTMENT	AREA:	38.7 Sq. M	416 Sq. ft	
	LIVING SPACE/KITCHEN:	5.33m x 3.92m	17'6" x 12'10"	Door to terrace
	BEDROOM 1:	3.25m x 3.23m	10'8" x 10'7"	
<b>5.13</b> ONE BEDROOM APARTMENT	AREA:	41.9 Sq. M	451 Sq. ft	
	LIVING SPACE/KITCHEN:	5.14m x 4.68m	16'10" x 15'4"	
	BEDROOM 1:	3.38m x 3.14m	11'1" x 10'4"	
<b>5.14</b> ONE BEDROOM APARTMENT	AREA:	39.2 Sq. M	421 Sq. ft	
	LIVING SPACE/KITCHEN:	6.25m x 4.43m	20'6" x 14'6"	
	BEDROOM 1:	3.37m x 3.00m	11'1" x 9'11"	
<b>5.15</b> DUPLEX APARTMENT	AREA:	89.0 Sq. M	957 Sq. ft	
	LIVING SPACE/KITCHEN:	5.76m x 4.06m	18'11" x 13'4"	Door to terrace
	BEDROOM 1:	5.44m x 4.61m	17'10" x 15'1"	Door to balcony
	BEDROOM 2:	3.92m x 3.00m	12'10" x 9'11"	
<b>5.16</b> TWO BEDROOM APARTMENT	AREA:	63.8 Sq. M	687 Sq. ft	
	LIVING SPACE/KITCHEN:	7.81m x 3.42m	25'7" x 11'3"	Door to terrace
	BEDROOM 1:	4.95m x 2.90m	16'3" x 9'6"	
	BEDROOM 2:	2.76m x 2.70m	9'1" x 8'10"	
<b>5.17</b> TWO BEDROOM APARTMENT	AREA:	59.8 Sq. M	644 Sq. ft	
	LIVING SPACE/KITCHEN:	7.81m x 3.41m	25'7" x 11'2"	Door to terrace
	BEDROOM 1:	3.84m x 2.66m	12'7" x 8'9"	
	BEDROOM 2:	3.02m x 2.70m	9'11" x 8'10"	
<b>5.18</b> TWO BEDROOM APARTMENT	AREA:	60.8 Sq. M	654 Sq. ft	
	LIVING SPACE/KITCHEN:	5.96m x 4.94m	19'6" x 16'2"	Door to corner terrace
	BEDROOM 1:	3.67m x 3.26m	12'0" x 10'8"	Door to corner terrace
	BEDROOM 2:	3.67m x 2.30m	12'0" x 7'6"	
<b>5.19</b> TWO BEDROOM APARTMENT	AREA:	60.8 Sq. M	654 Sq. ft	
	LIVING SPACE/KITCHEN:	5.34m x 4.43m	17'6" x 14'6"	
	BEDROOM 1:	3.89m x 2.83m	12'9" x 9'3"	Door to recessed area
	BEDROOM 2:	3.39m x 2.27m	11'1" x 7'5"	
<b>5.20</b> TWO BEDROOM APARTMENT	AREA:	63.8 Sq. M	686 Sq. ft	
	LIVING SPACE/KITCHEN:	6.23m x 4.55m	20'5" x 14'11"	
	BEDROOM 1:	3.88m x 2.83m	12'9" x 9'3"	Door to recessed area
	BEDROOM 2:	3.39m x 2.27m	11'1" x 7'5"	
<b>5.21</b> TWO BEDROOM APARTMENT	AREA:	60.7 Sq. M	653 Sq. ft	
	LIVING SPACE/KITCHEN:	5.96m x 4.94m	19'7" x 16'2"	Door to corner terrace
	BEDROOM 1:	3.67m x 3.26m	12'0" x 10'8"	Door to corner terrace
	BEDROOM 2:	3.03m x 2.30m	9'11" x 7'6"	
<b>5.22</b> TWO BEDROOM APARTMENT	AREA:	59.9 Sq. M	645 Sq. ft	
	LIVING SPACE/KITCHEN:	7.81m x 3.71m	25'7" x 12'2"	Door to terrace
	BEDROOM 1:	3.84m x 2.66m	12'7" x 8'9"	
	BEDROOM 2:	3.02m x 2.70m	9'11" x 8'10"	

Due to the nature of conversion works, layouts, sizes and specification may change. Purchasers please check all details on site before completion.

# FIFTH FLOOR CONT.

**5.23**

**TWO BEDROOM  
APARTMENT**

AREA:	63.8 Sq. M	687 Sq. ft	
LIVING SPACE/KITCHEN:	7.81m x 4.69m	25'7" x 15'5"	Door to terrace
BEDROOM 1:	5.08m x 2.90m	16'8" x 9'6"	
BEDROOM 2:	2.76m x 2.70m	9'0" x 8'10"	

**5.24**

**DUPLEX  
APARTMENT**

AREA:	89.0 Sq. M	957 Sq. ft	
LIVING SPACE/KITCHEN:	5.76m x 4.06m	18'11" x 13'4"	Door to terrace
BEDROOM 1:	5.44m x 4.61m	17'10" x 15'1"	Door to balcony
BEDROOM 2:	3.92m x 3.00m	12'10" x 9'11"	

**5.25**

**TWO BEDROOM  
APARTMENT**

AREA:	89.0 Sq. M	957 Sq. ft	
LIVING SPACE/KITCHEN:	5.76m x 4.06m	18'11" x 13'4"	Door to terrace
BEDROOM 1:	5.44m x 4.61m	17'10" x 15'1"	Door to balcony
BEDROOM 2:	3.92m x 3.00m	12'10" x 9'11"	

**5.26**

**TWO BEDROOM  
APARTMENT**

AREA:	63.8 Sq. M	687 Sq. ft	
LIVING SPACE/KITCHEN:	7.81m x 4.69m	25'7" x 15'5"	Door to terrace
BEDROOM 1:	5.08m x 2.90m	16'8" x 9'6"	
BEDROOM 2:	2.76m x 2.70m	9'1" x 8'10"	

**5.27**

**TWO BEDROOM  
APARTMENT**

AREA:	60.7 Sq. M	653 Sq. ft	
LIVING SPACE/KITCHEN:	7.81m x 3.71m	25'7" x 12'2"	Door to terrace
BEDROOM 1:	3.84m x 2.66m	12'7" x 8'9"	
BEDROOM 2:	3.02m x 2.70m	9'11" x 8'10"	

**5.28**

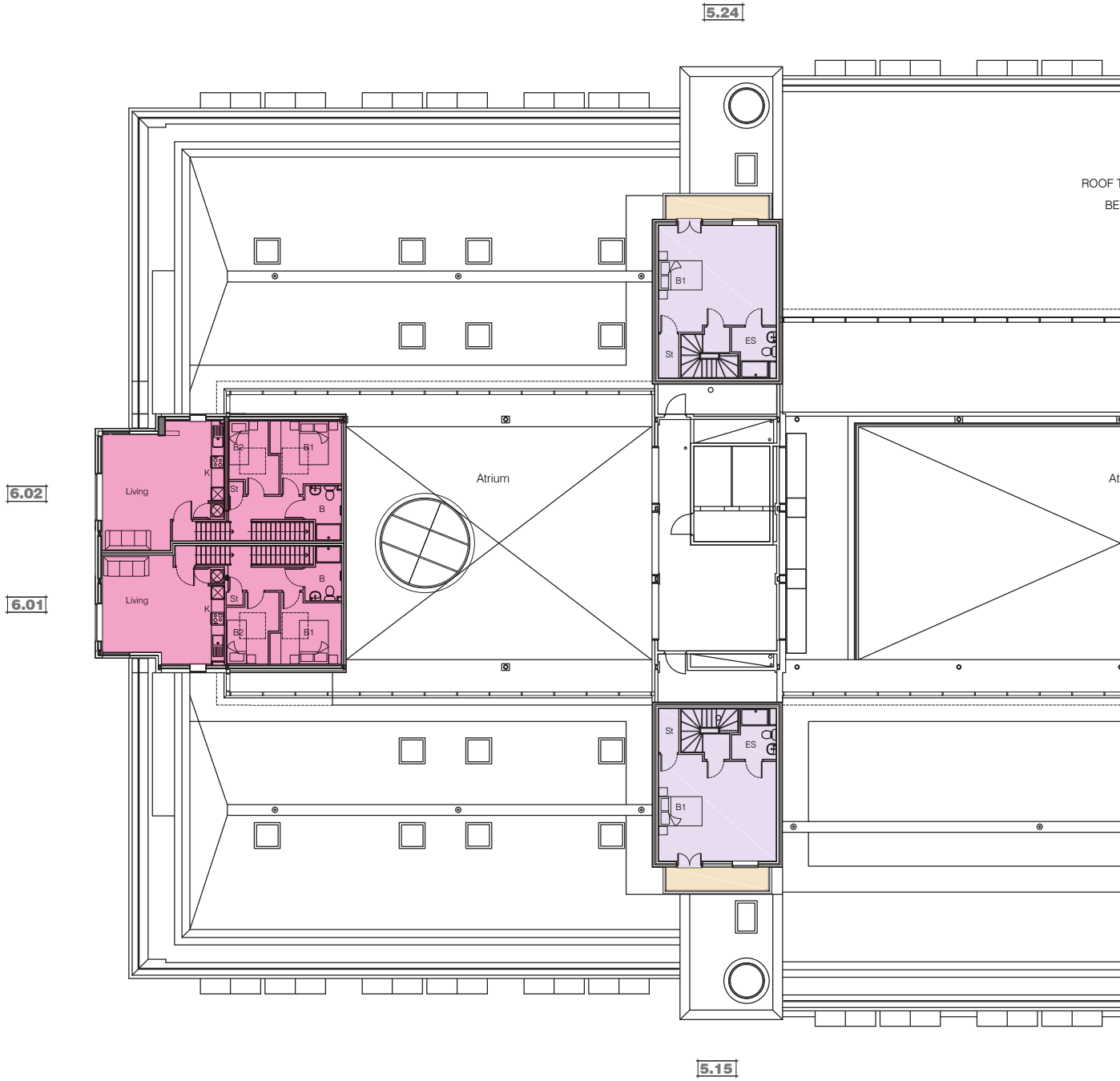
**TWO  
APARTMENT**

AREA:	62.1 Sq. M	668 Sq. ft	
LIVING SPACE/KITCHEN:	5.96m x 4.94m	19'7" x 16'2"	Door to corner terrace
BEDROOM 1:	3.93m x 3.11m	12'11" x 10'2"	Door to corner terrace
BEDROOM 2:	3.93m x 2.15m	12'11" x 7'1"	

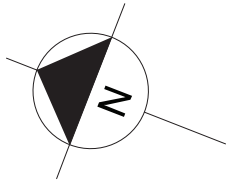
Due to the nature of conversion works, layouts, sizes and specification may change. Purchasers please check all details on site before completion.



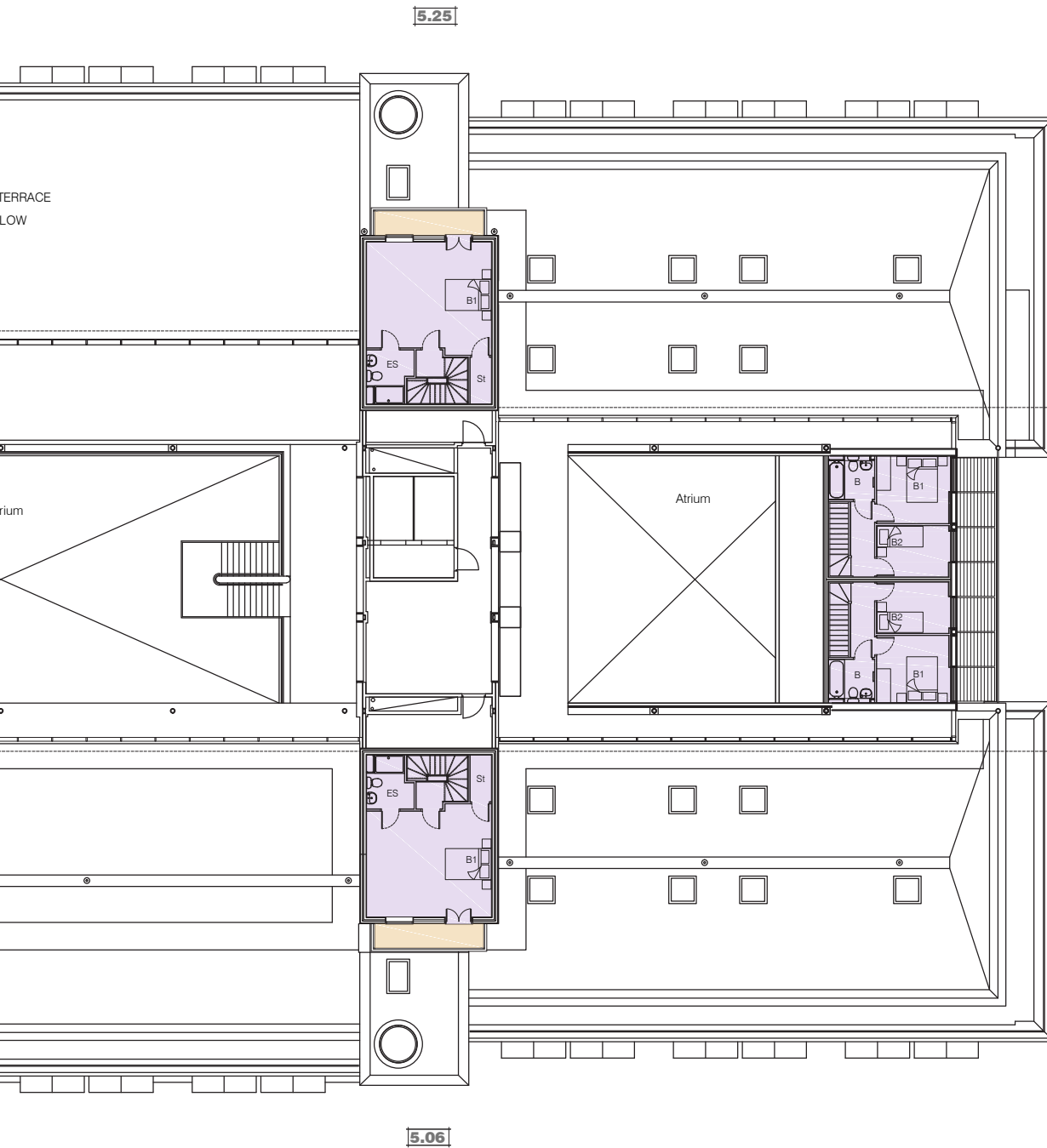
# SIXTH FLOOR



CAR



- Two Bedroom Duplex Apartment
- Two Bedroom Split Level Apartment
- Private Terrace



EDINBURGH GATE

PARK

Due to the nature of conversion works, layouts, sizes and specification may change.  
Purchasers please check all details on site before completion.

# SCHEDULE OF ACCOMMODATION

## SIXTH FLOOR

**6.01**

**TWO BEDROOM  
SPLIT LEVEL APARTMENT**

AREA:	57.7 Sq. M	621 Sq. ft
LIVING SPACE/KITCHEN:	5.65m x 4.50m	18'6" x 14'9"
BEDROOM 1:	3.33m x 3.30m	10'11" x 10'10"
BEDROOM 2:	3.33m x 2.43m	10'11" x 7'12"

**6.02**

**TWO BEDROOM  
SPLIT LEVEL APARTMENT**

AREA:	60.3 Sq. M	649 Sq. ft
LIVING SPACE/KITCHEN:	5.65m x 5.39m	18'6" x 17'8"
BEDROOM 1:	3.30m x 2.90m	10'10" x 9'6"
BEDROOM 2:	3.40m x 2.33m	11'2" x 7'8"

Due to the nature of conversion works, layouts, sizes and specification may change. Purchasers please check all details on site before completion.





## *Edinburgh House*

EDINBURGH WAY HARLOW CM20 2JE



ALL SALES ENQUIRIES

SOLE AGENTS - LANES NEW HOMES | T - 01992 663890 | E - EH@LANESNEWHOMES.CO.UK



**LAND CHARTER HOMES**

INFO@LANDCHARTER.CO.UK | WWW.LANDCHARTERHOMES.CO.UK